

## HOMEWORK 2: OHM'S LAW

1.



$$V_{AB} = \underline{\hspace{2cm}}$$

$$I_{AB} = \underline{\hspace{2cm}}$$

$$P = \underline{\hspace{2cm}}$$

2.



$$V_{AC} = \underline{\hspace{2cm}}$$

$$I_{AC} = \underline{\hspace{2cm}}$$

$$I_{AB} = \underline{\hspace{2cm}}$$

$$I_{BC} = \underline{\hspace{2cm}}$$

$$V_{AB} = \underline{\hspace{2cm}}$$

$$V_{BC} = \underline{\hspace{2cm}}$$

$$P = \underline{\hspace{2cm}}$$

Remember:

$$V = I * R$$

$$P = V * I$$

Write your Units:

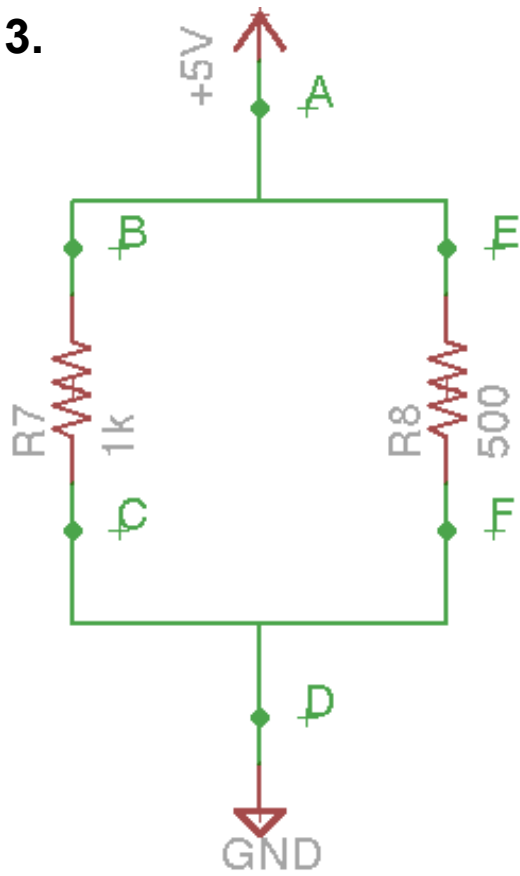
V is in Volts

I is in Amps

R is in Ohms

All resistor values are in Ohms.

3.



$$V_{AD} = \underline{\hspace{2cm}}$$

$$V_{BC} = \underline{\hspace{2cm}}$$

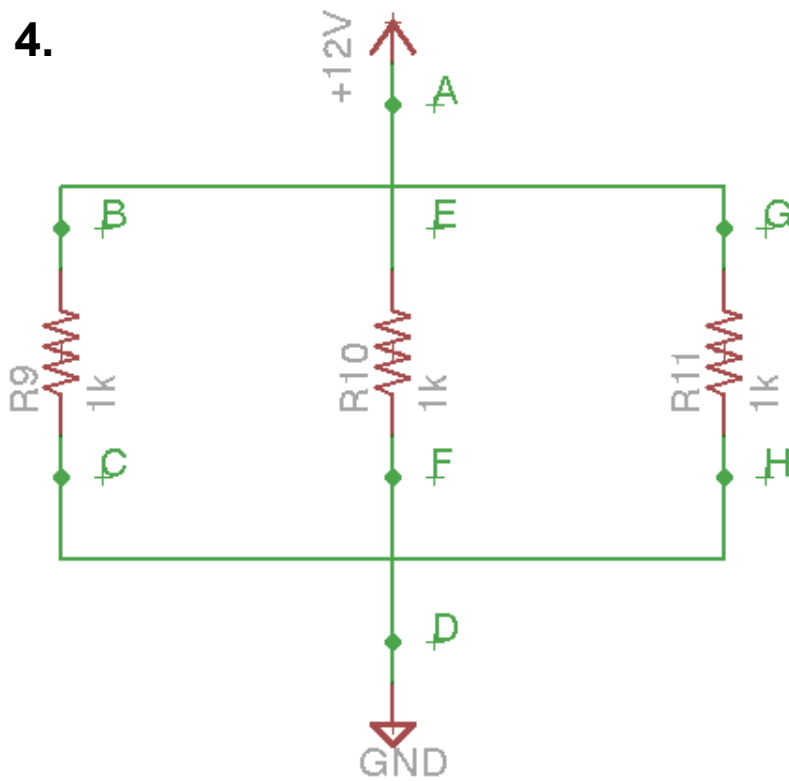
$$V_{EF} = \underline{\hspace{2cm}}$$

$$I_{BC} = \underline{\hspace{2cm}}$$

$$I_{EF} = \underline{\hspace{2cm}}$$

$$I_{AD} = \underline{\hspace{2cm}}$$

4.



$$V_{AD} = \underline{\hspace{2cm}}$$

$$V_{BC} = \underline{\hspace{2cm}}$$

$$V_{EF} = \underline{\hspace{2cm}}$$

$$V_{GH} = \underline{\hspace{2cm}}$$

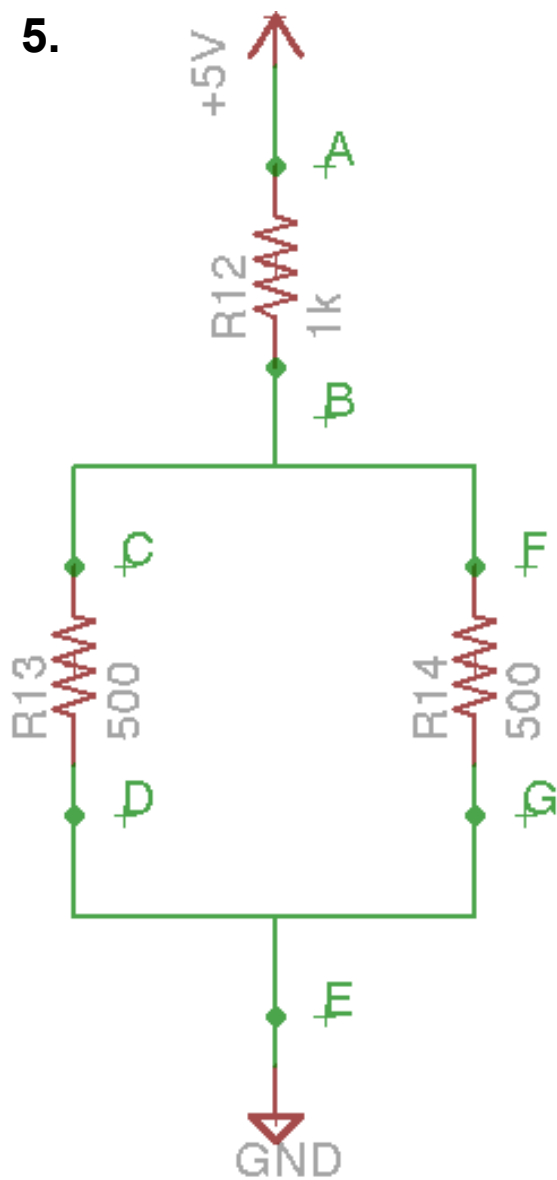
$$I_{BC} = \underline{\hspace{2cm}}$$

$$I_{EF} = \underline{\hspace{2cm}}$$

$$I_{GH} = \underline{\hspace{2cm}}$$

$$I_{AD} = \underline{\hspace{2cm}}$$

5.



$$V_{AE} = \underline{\hspace{2cm}}$$

$$V_{BE} = \underline{\hspace{2cm}}$$

$$V_{AB} = \underline{\hspace{2cm}}$$

$$I_{CD} = \underline{\hspace{2cm}}$$

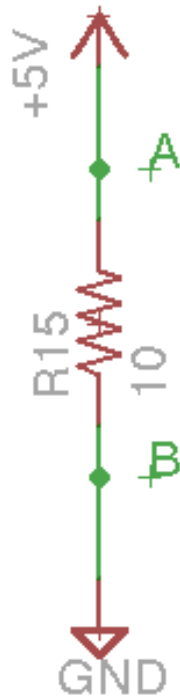
$$I_{FG} = \underline{\hspace{2cm}}$$

$$I_{BE} = \underline{\hspace{2cm}}$$

$$I_{AB} = \underline{\hspace{2cm}}$$

$$I_{AE} = \underline{\hspace{2cm}}$$

6.



$$V_{AB} = \underline{\hspace{2cm}}$$

$$I_{AB} = \underline{\hspace{2cm}}$$

$$P = \underline{\hspace{2cm}}$$

*hmmm.. these are  
1/4 W resistors (0.25 W)*